



1. Put the graphic and top bar together like this



2. Remove the end caps



3. Open the top bar



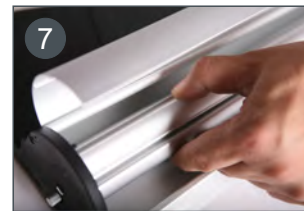
4. Insert the graphic and press the top bar



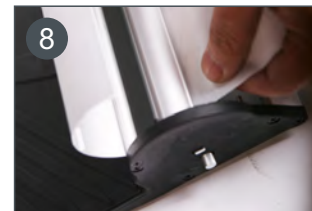
5. Fix the end caps



6. Open the cover of body  
(Break it off with your fingers on the two sides of of body)



7. Open the rolling clip



8. Insert the graphic into the body



9. Close the cover of body



10. Hold the graphic and remove the spring key



11. Allow the graphic go into the base



1. Bag with stand



2. Open the bag



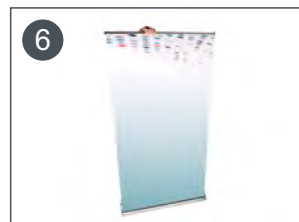
3. Take out the base from the bag



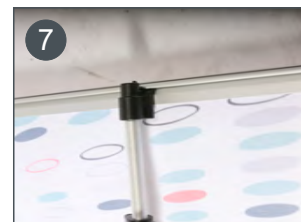
4. Open and close to adjust the height of the pole



5. Insert the pole into base



6. Tilt the unit toward yourself while raising the graphic to the top of the pole



7. Fix the top bar



8. Finished